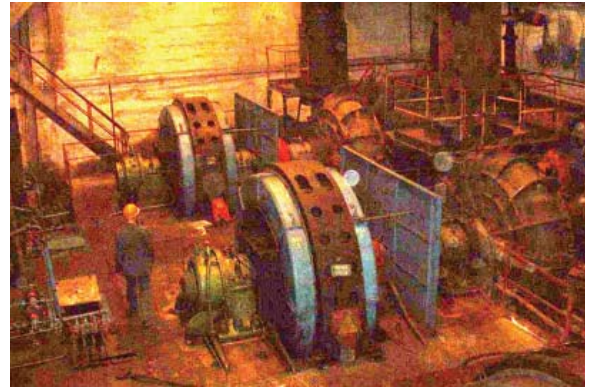


## Soft Starters for the Mining Applications

### Driving 4 Synchronous Motors

Motor ratings: 6600V, 600A  
Noriilsk, Russia



4 motors at 6600V / 600A



One Multi-Start Solcon HRVS-DN starting 4 synchronous motors at 6600V/600A - Cost effective with low spatial overhead

The Solcon HRVS-DN soft starter with its multi-start, starting capabilities proved to be the ideal solution for this application. The HRVS-DN line-up is built in a Multi-Start arrangement, starting each of the 4 synchronous motors sequentially.

One soft starter for four motors saves precious space, engineering, construction and installation costs.

Solcon is known for their ability to provide unique, cost-effective solutions in difficult applications.

